



**Digital Security Systems**

**JDS Digital Security Systems**  
P.O. Box 374  
New Baltimore, MI 48047  
(586) 749-6342  
(734) 629-1555 Fax  
www.softsite32.com

---

## **NC\_Setup**

Quickstart

04/17/10

1.0

Enterprise C2 Node Controller Setup, allows you to define the monitor layouts associated with Node Controller. These layouts can contain all or some of the monitors on your network.

### Explanation of Product

#### **1. Setup the application**

Node Controller Setup, should be already configured to work on the local computer. If your database is not local to the computer, you will need to point the application to the NC\_Setup.mdb.

- 1) Locate the NC\_Setup.ini in the Enterprise C2 NC folder(C:\Program Files\Enterprise C2 NC)
- 2) Open the NC\_Setup.ini(should open in notepad)
- 3) Edit the Database\_Path= to match the location of the NC\_Setup.mdb. The path can be
  - Absolute - C:\Program Files\Enterprise C2 NC\Database\NC\_Setup.mdb
  - Relative - \Database\NC\_Setup.mdb
  - UNC - \\192.168.1.100\Database\NC\_Setup.mdb
- 4) Save NC\_Setup.ini, and close it

#### **2. Launch the application**

To launch the application we need to open the Node Controller folder.

- 1) Locate the Enterprise C2 NC folder(C:\Program Files\Enterprise C2 NC)
- 2) Double-Click the NC\_Setup.exe

#### **3. Main Window**

The main window is displayed, and we need to create a profile first.



**Digital Security Systems**

**JDS Digital Security Systems**

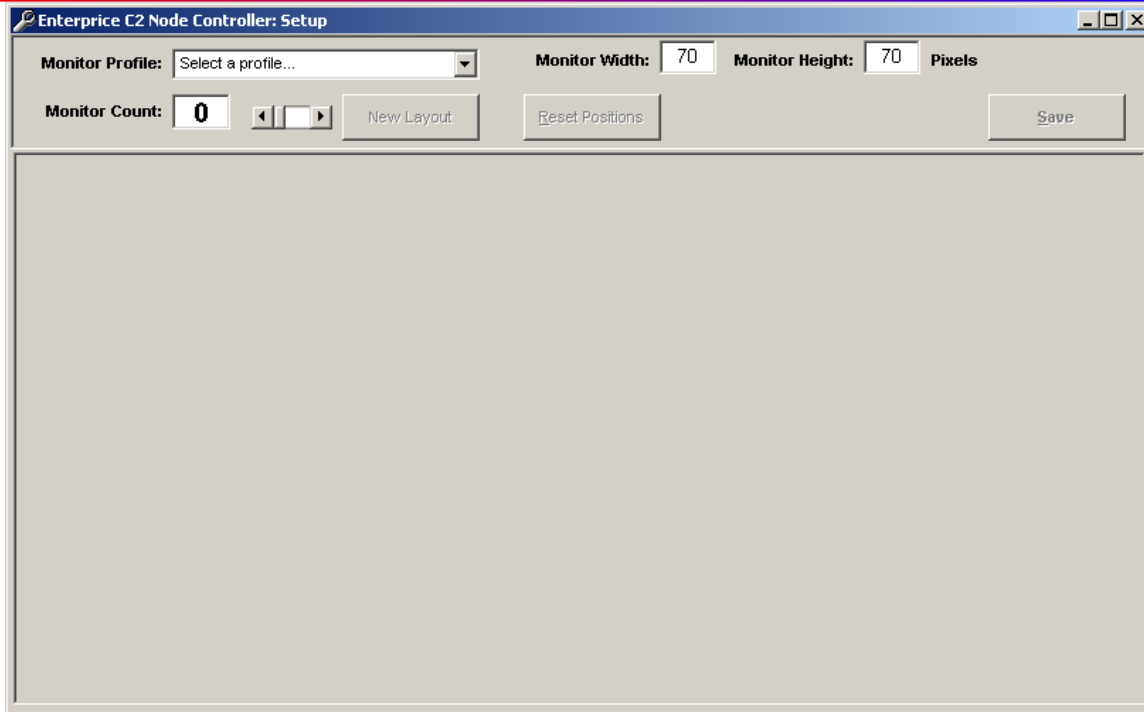
P.O. Box 374

New Baltimore, MI 48047

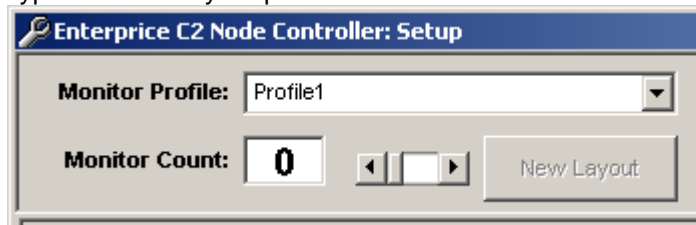
(586) 749-6342

(734) 629-1555 Fax

www.softsite32.com



- 1) Type a name for your profile



- 2) Enter the total number of monitors you wish to have available to the profile
- 3) Subsection 3

#### 4. Section 4

- 1) Subsection 1
- 2) Subsection 2
- 3) Subsection 3

#### 5. Section 5

- 1) Subsection 1
- 2) Subsection 2
- 3) Subsection 3

#### 6. Section 6

- 1) Subsection 1
- 2) Subsection 2
- 3) Subsection 3



**Digital Security Systems**

**JDS Digital Security Systems**

P.O. Box 374

New Baltimore, MI 48047

(586) 749-6342

(734) 629-1555 Fax

[www.softsite32.com](http://www.softsite32.com)

